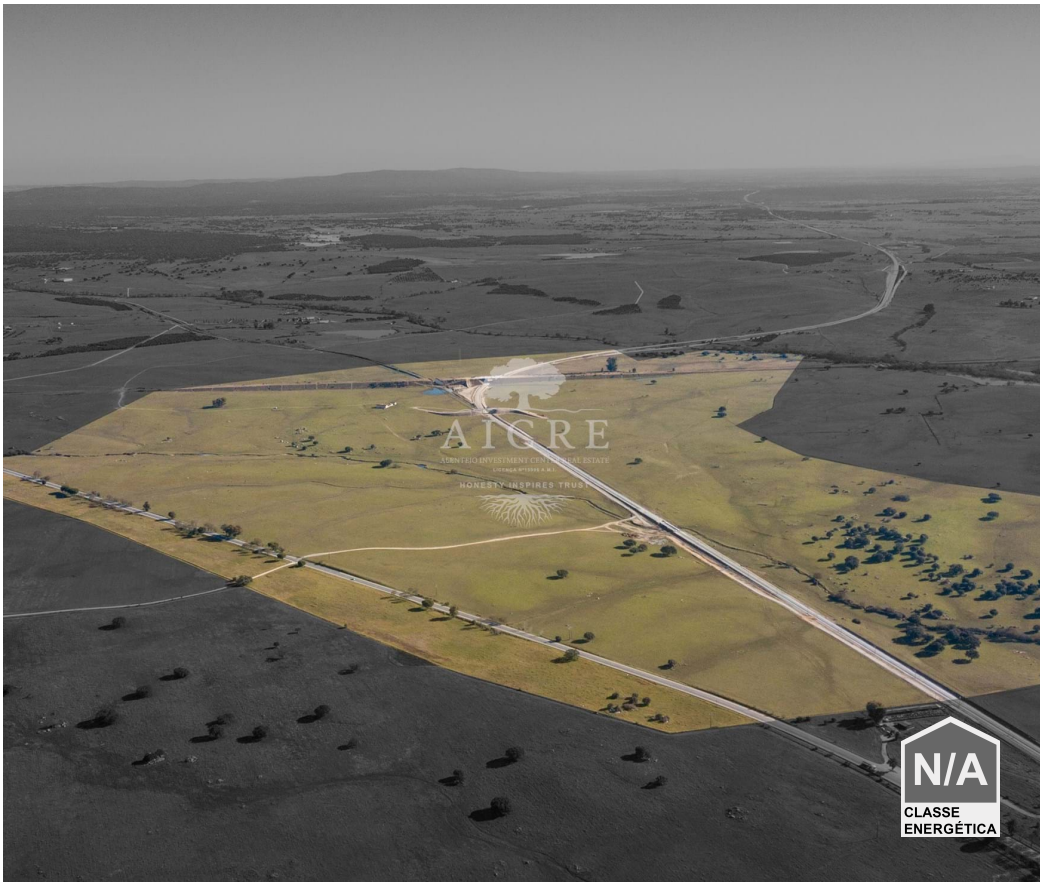




Bacelo e Senhora da Saúde - Land



224000 **22400**

Area (m²)

Land Area (m²)

2 999 950 €

(EUR €)

Property Features

- Energetic certification: Exempt



Ernesto Mira

913312653 ²

emira@aicre.pt

T +351 924 373 043 ² · T +351 266 705 936 ¹ · E geral@aicre.pt

Rua Horta das Figueiras 80 R/C, Évora
AMI 15996

¹ (Call to national fixed network) | ² (Call to national mobile network)